



Installation instructions

安装说明

One-Piece toilet

连体座便器



Important information

4

重要说明

5



Installation, Montage, Montaje, 安装

6

en

zh



Important information

en

About these instructions

The installation instructions come as part of the Duravit product and must be read carefully prior to installation.

Target readership and qualifications

This is a professional grade product. A working knowledge of construction techniques and code compliant plumbing installation are required for proper installation and user satisfaction. The product must be installed by a licensed plumber.

Explanation of the key words and symbols



Indicates a hazardous situation which, if not avoided, could result in death or serious injury.



Is used to address practices not related to physical injury.



Link to **installation information** in this section



Link to other **instructions**



Inspection (e.g. for scratches)



Inspect for leaks and that all connections have a watertight seal



Delivery contents



Accessories (not included)

> Action required

Safety instructions

Risk of personal injury or breakage through fragile product!

- > 2 people are recommended of handling.
- > Handle with care.

Product and / or property damage

The breach of local and country-specific regulations and standards can cause damage to the product and/or property damage.

- > Observe the local installation regulations and any country-specific standards at all times.

Prior to the installation

Please read specification sheets prior to the installation. Specification sheets are available for download at pro.duravit.us.

Water installation

	High efficiency toilet	Operation pressure Recommended:
Single flush	1.28 gpf / 4.8 lpf	25 – 80 psi / 172 – 550 kPa
Dual flush	1.32/0.92 gpf / 5.0/3.5 lpf	20 – 80 psi / 140 – 550 kPa

Installation information

- > For more details scan QR Code on packaging label.

1 Inspection

- > Inspect product for any potential damage that may have occurred during transport.
- > Do not install if any damage is visible.

6 Risk of external leaks!



Risk of external leaks!

- > Do not lift or rock the toilet after placement.
- > If you break the watertight seal, you must install a new wax seal.

7 Risk of product damage!



Risk of product damage!

- > Overtightening may cause breakage or chipping of vitreous china.
- > Handle with care.

关于这些说明

这些安装说明是 Duravit 产品的一部分，必须在安装前仔细阅读。

目标读者和资质要求

这是一个专业级产品。需要有施工技术方面专业知识和符合规范的水管安装，才能正确安装本产品，使用户满意。本产品必须由专业的水暖工安装。

关键字和符号说明



警告

表示如果不可避免可能会导致死亡或严重受伤的危险情况。

注意

用于指可能会导致身体伤害的操作。



连结至本节的安装说明



请参阅详细说明



检查（例如刮擦）



检查是否有漏水以及是否所有连接处都有密封胶垫。



交付内容



配件（不包含）

> 需要采取的动作

安全说明

产品易碎，有个人受伤或产品破碎的风险！

- > 建议由 2 人进行搬运。
- > 小心轻放。

产品/财产损失

违反地方和国家相应规例和标准会造成产品/财产损失。
> 随时遵守所在地方和国家安装规例及相应标准。

安装前

安装前请阅读规格表。规格表可在 pro.duravit.cn 下载。

水管安装

高效座便器

操作压力
(建议)

单冲水

1.28 gpf / 4.8 lpf

25 – 80 psi /
172 – 550 kPa

双冲水

1.32/0.92 gpf /
5.0/3.5 lpf

20 – 80 psi /
140 – 550 kPa

安装说明

> 扫描包装标签上的QR码了解更多详情。

1 检查

- > 检查产品是否出现了可能由于运输导致的损坏。
- > 如果发现有损坏，请勿安装。

6 外部渗漏风险

注意

外部渗漏风险！

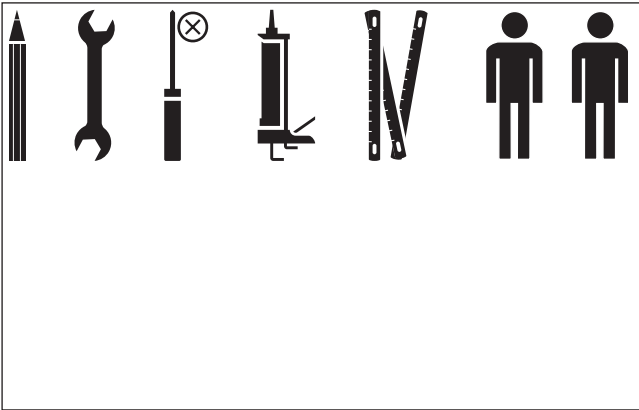
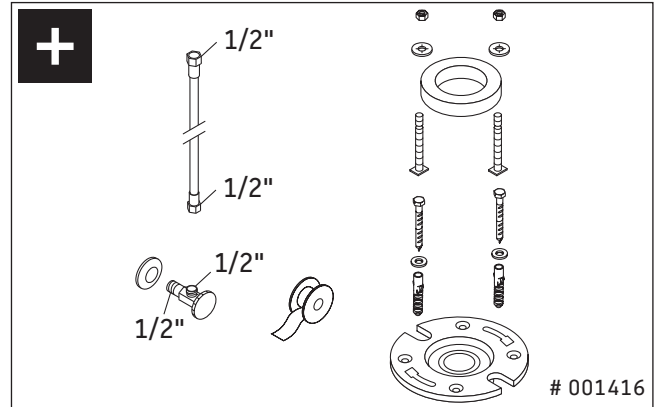
- > 放置好后，请勿提起或摇晃坐便器。
- > 如果损坏了坐便器的密封蜡圈，必须安装新的蜡圈。

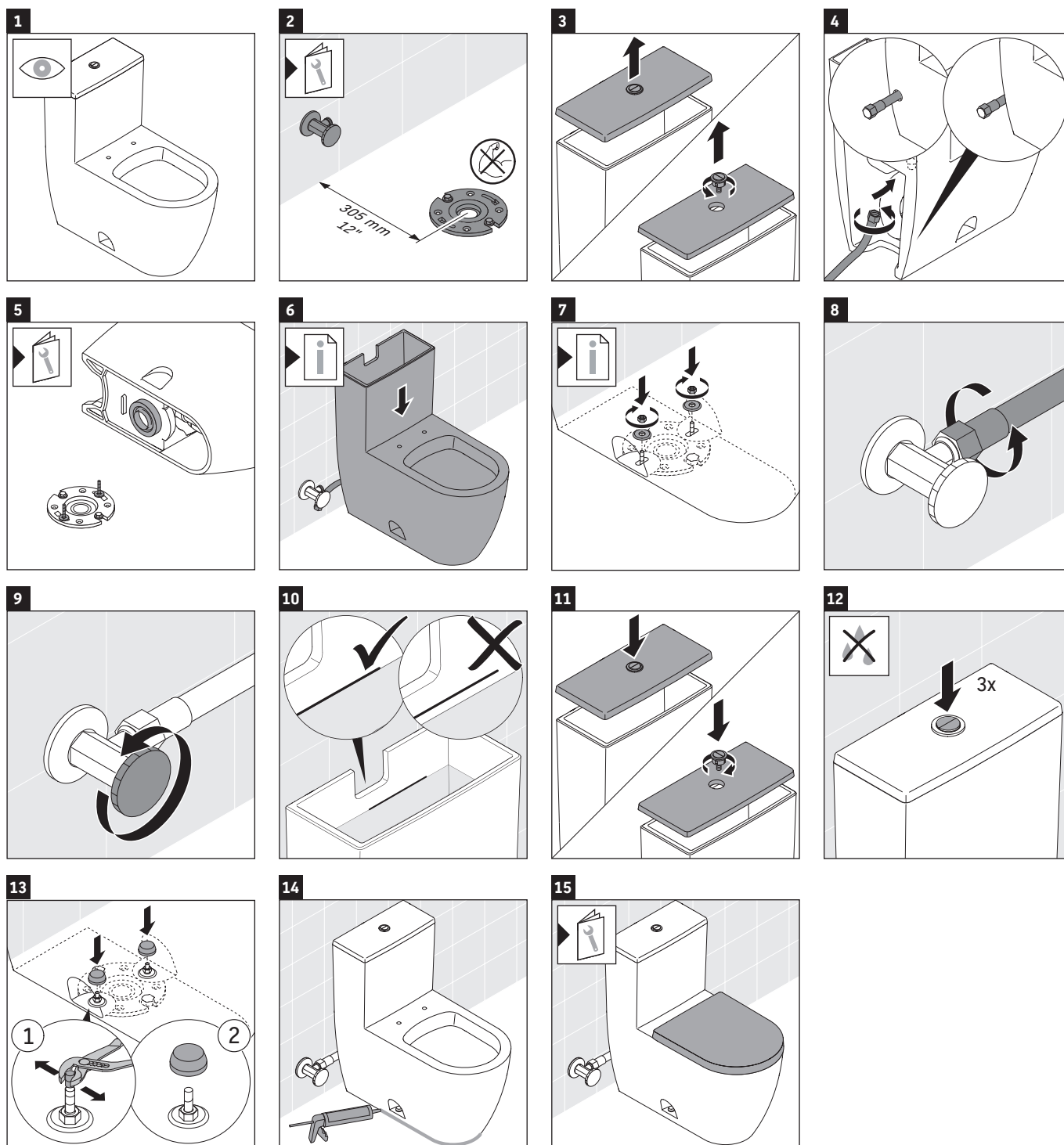
7 产品损坏的风险！

注意

产品损坏的风险！

- > 拧的过紧可能会导致陶瓷损坏或破碎。
- > 小心轻放。





DURAVIT AG
P.O. Box 240
Werderstr. 36
78132 Hornberg
Germany
Phone +49 78 33 70 0
Fax +49 78 33 70 289
info@duravit.com
www.duravit.com

